

SAO PAULO

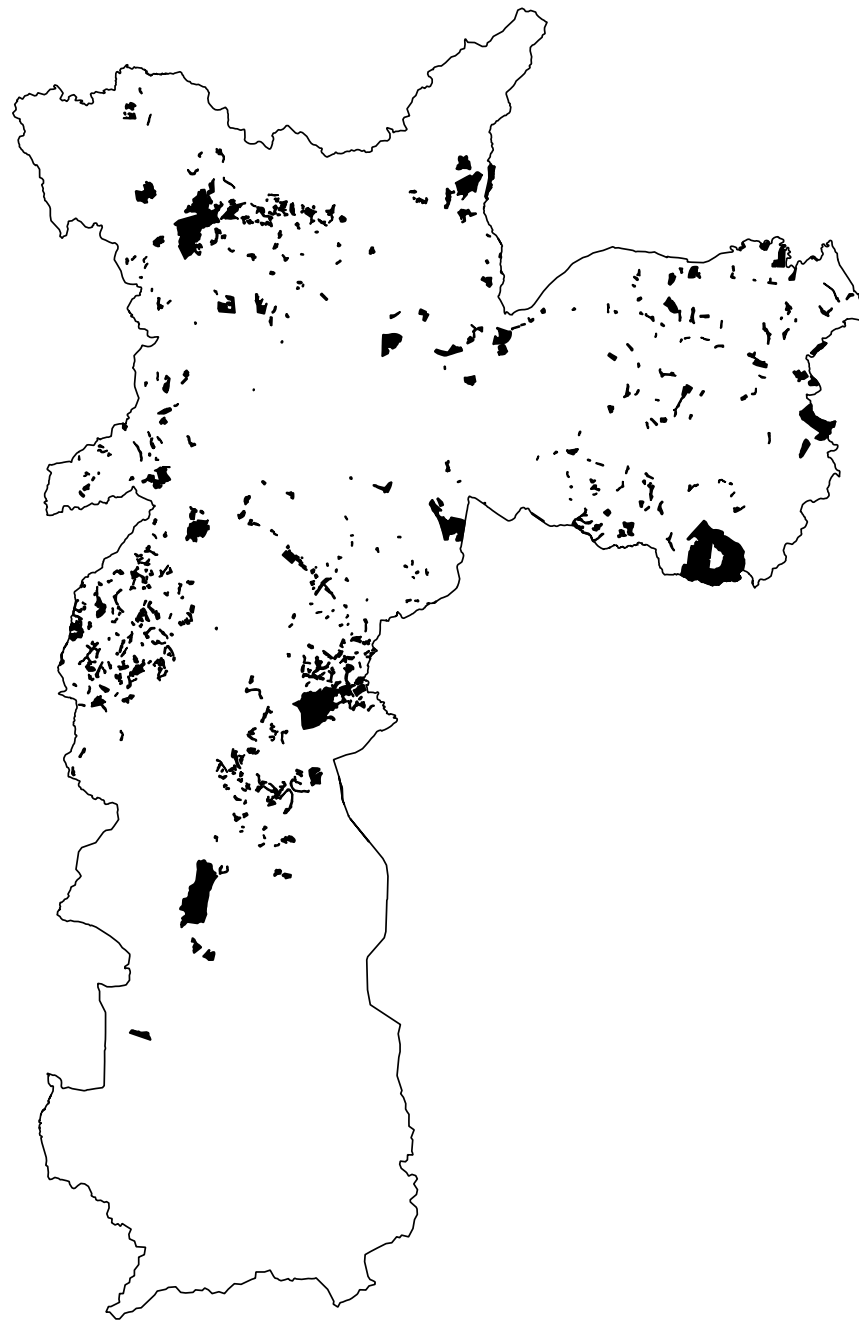
- 1 INFORMAL SETTLEMENT BY CENSUS SECTOR
- 2 TOILET ACCESS - INFORMAL SECTORS ONLY
- 3 TOILET ACCESS - ALL SECTORS
- 4 GUARAPIRANGA: INFORMAL SETTLEMENT BY CENSUS SECTOR
- 5 GUARAPIRANGA: TOILET ACCESS - INFORMAL SECTORS ONLY
- 6 GUARAPIRANGA: TOILET ACCESS - ALL SECTORS

JOHANNESBURG

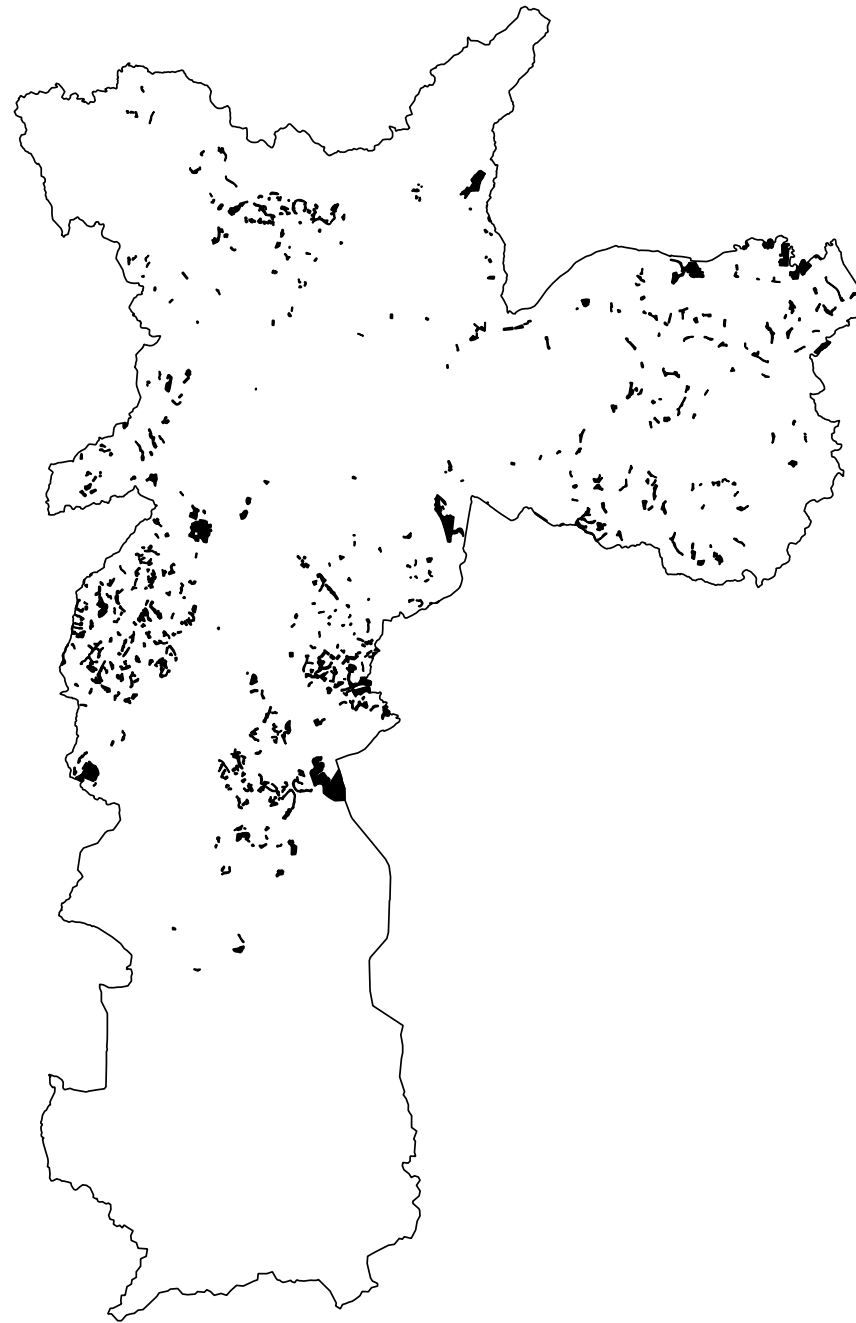
- 7 INFORMAL SETTLEMENT BY SUBPLACE
- 8 TOILET ACCESS - INFORMAL SUBPLACES ONLY
- 9 TOILET ACCESS - ALL SUBPLACES

SAO PAULO

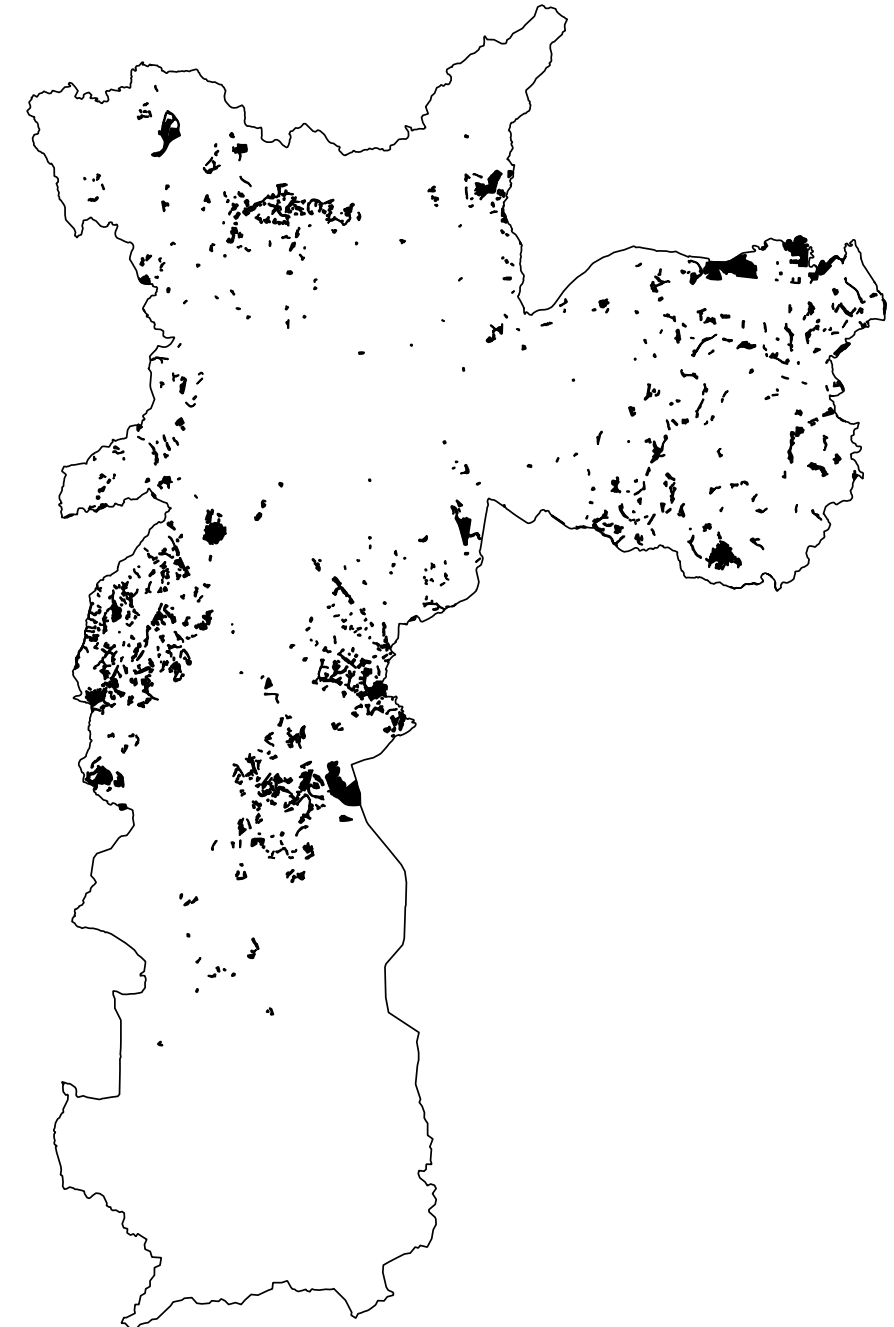
1 INFORMAL SETTLEMENT BY CENSUS SECTOR



1991



2000



2010

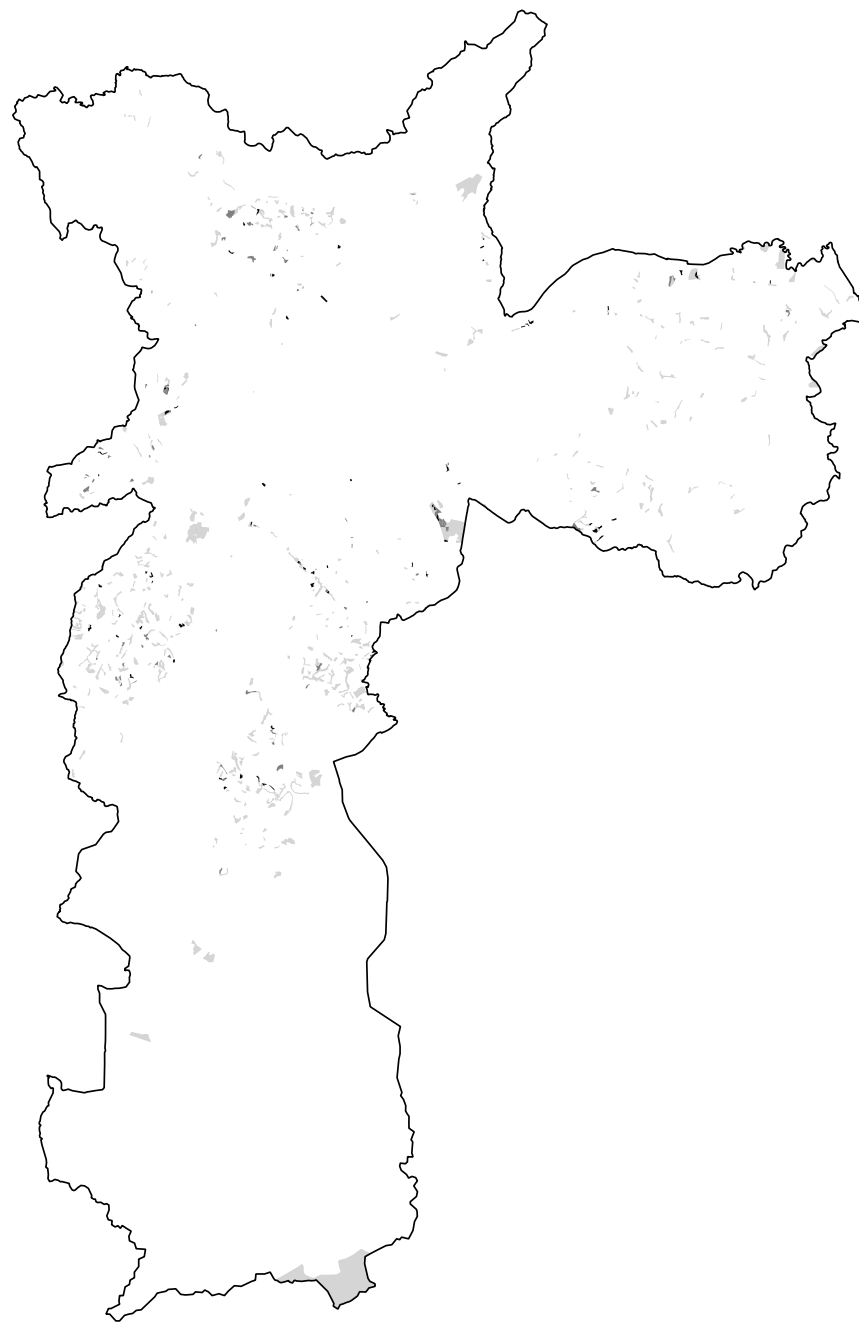


source: Brazilian Institute of Geography and Statistics (IBGE)

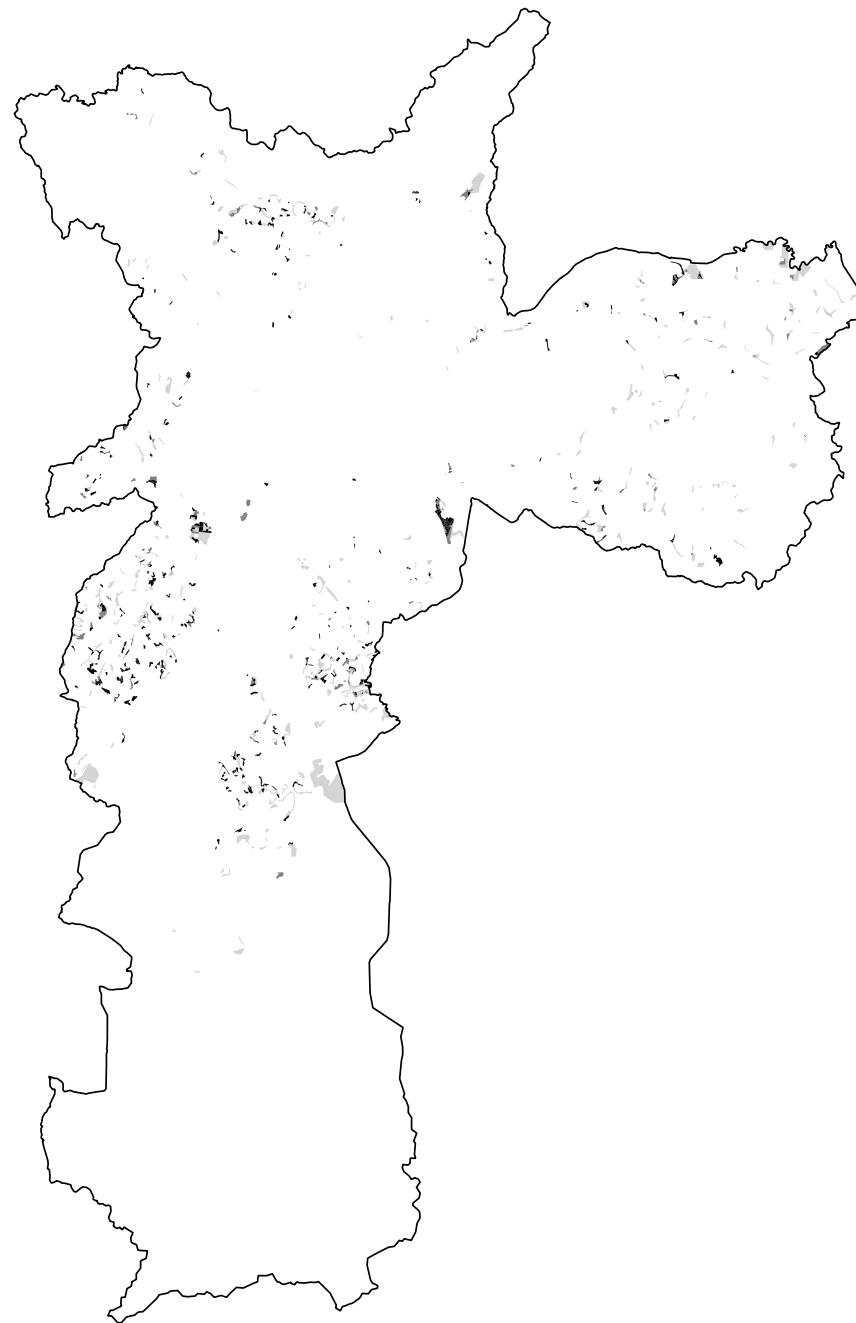
Informal
Designation (min.
51 hh)

SAO PAULO

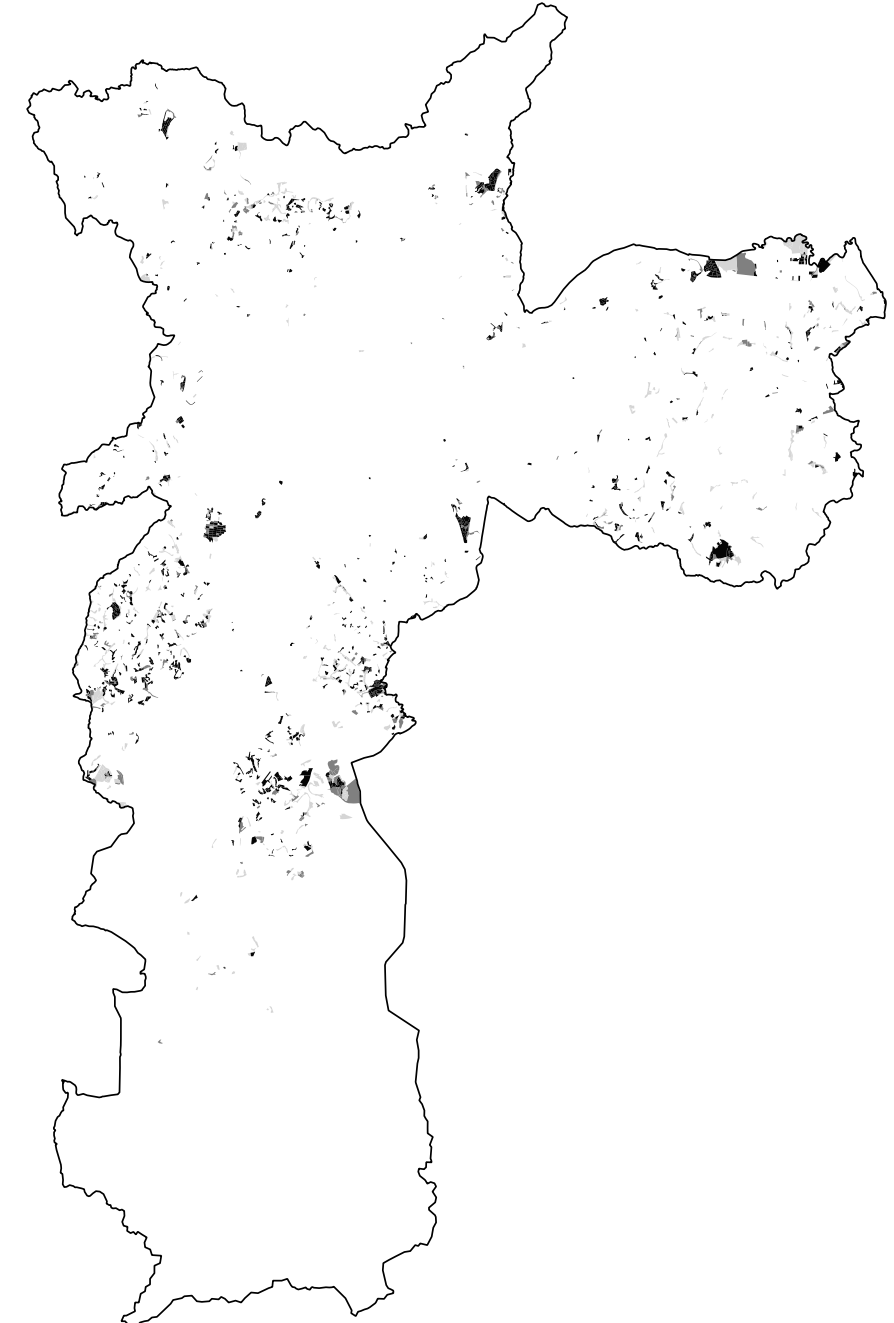
2 SEWER TOILET ACCESS - INFORMAL SECTORS ONLY



1991



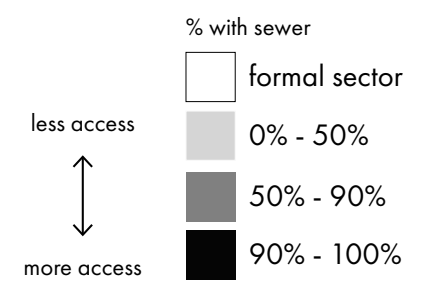
2000



2010

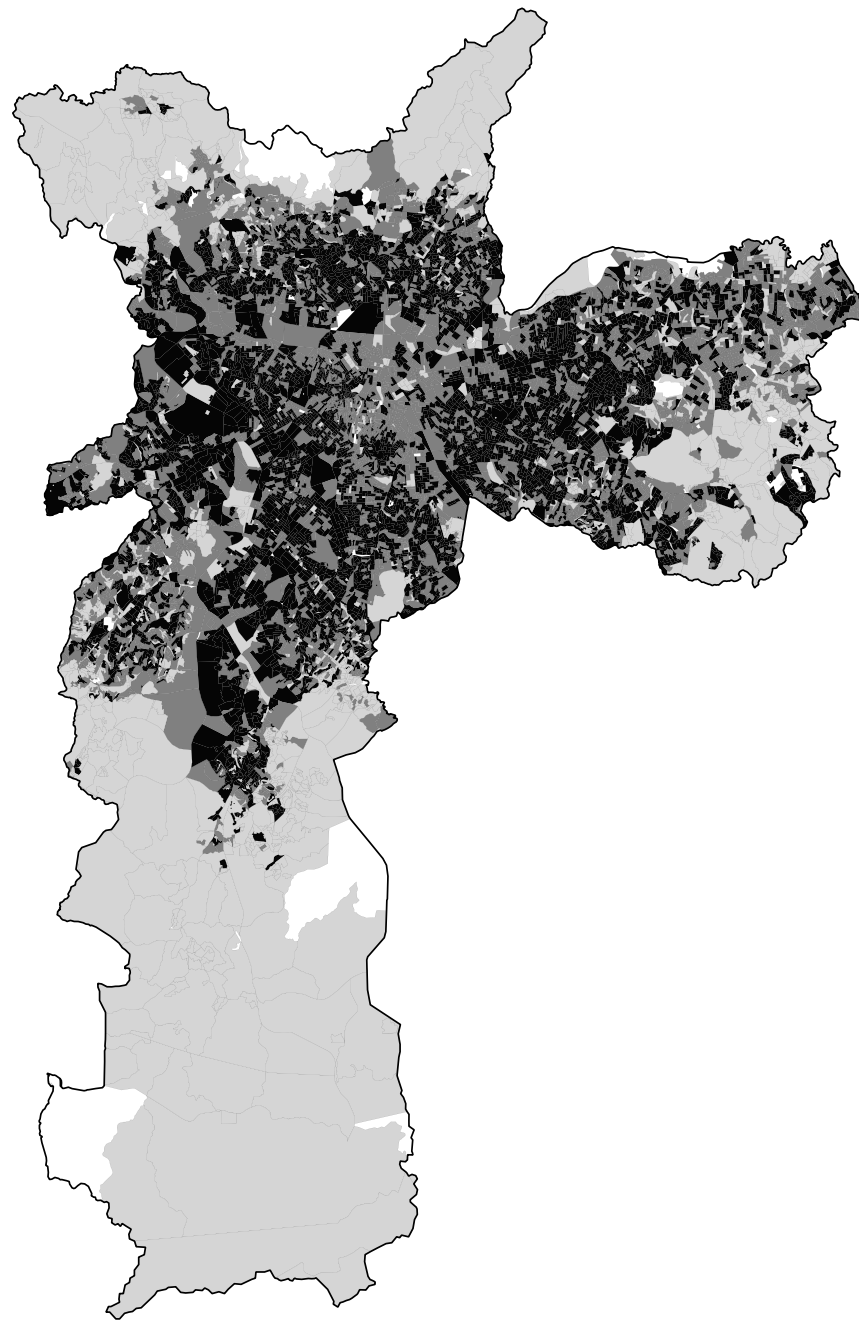


source: Brazilian Institute of Geography and Statistics (IBGE)

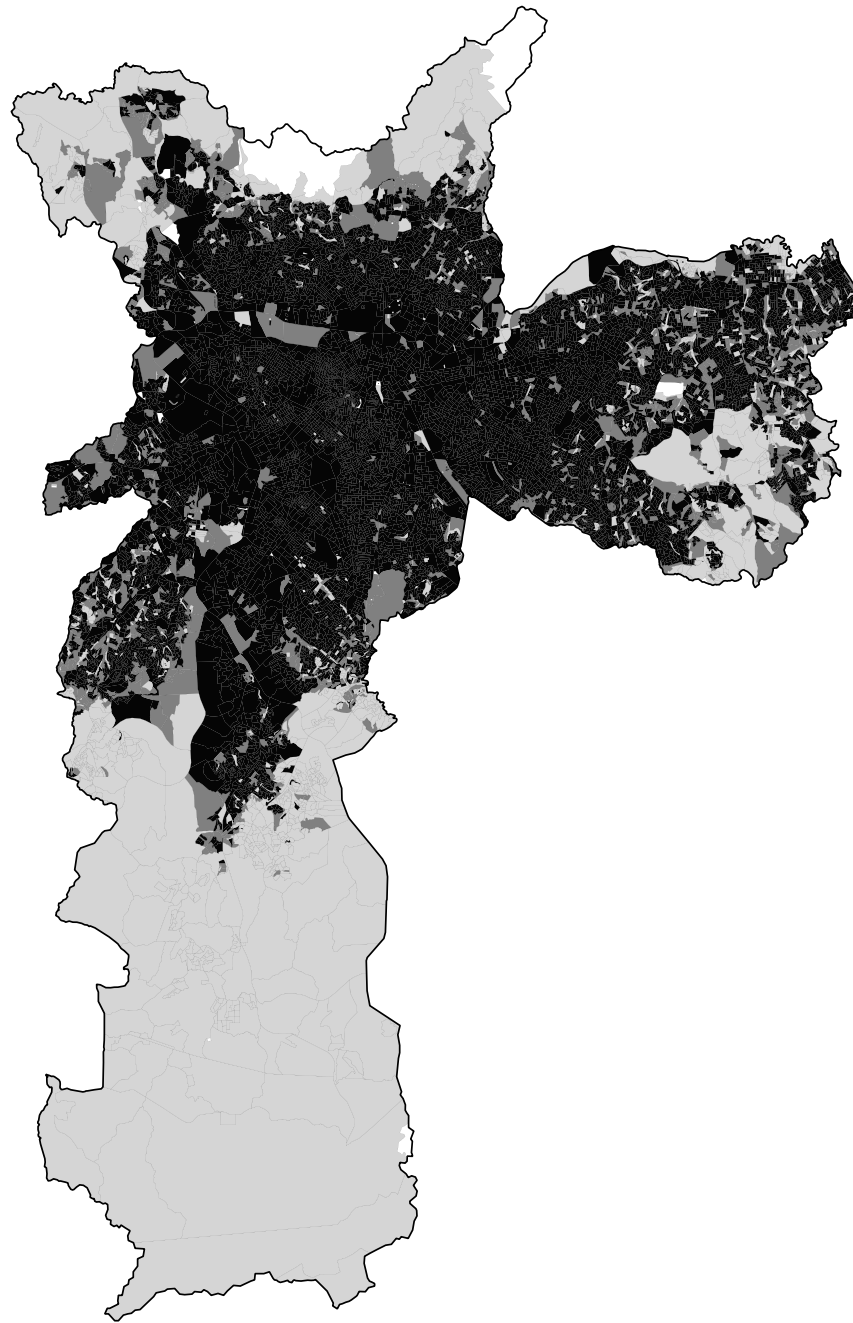


SAO PAULO

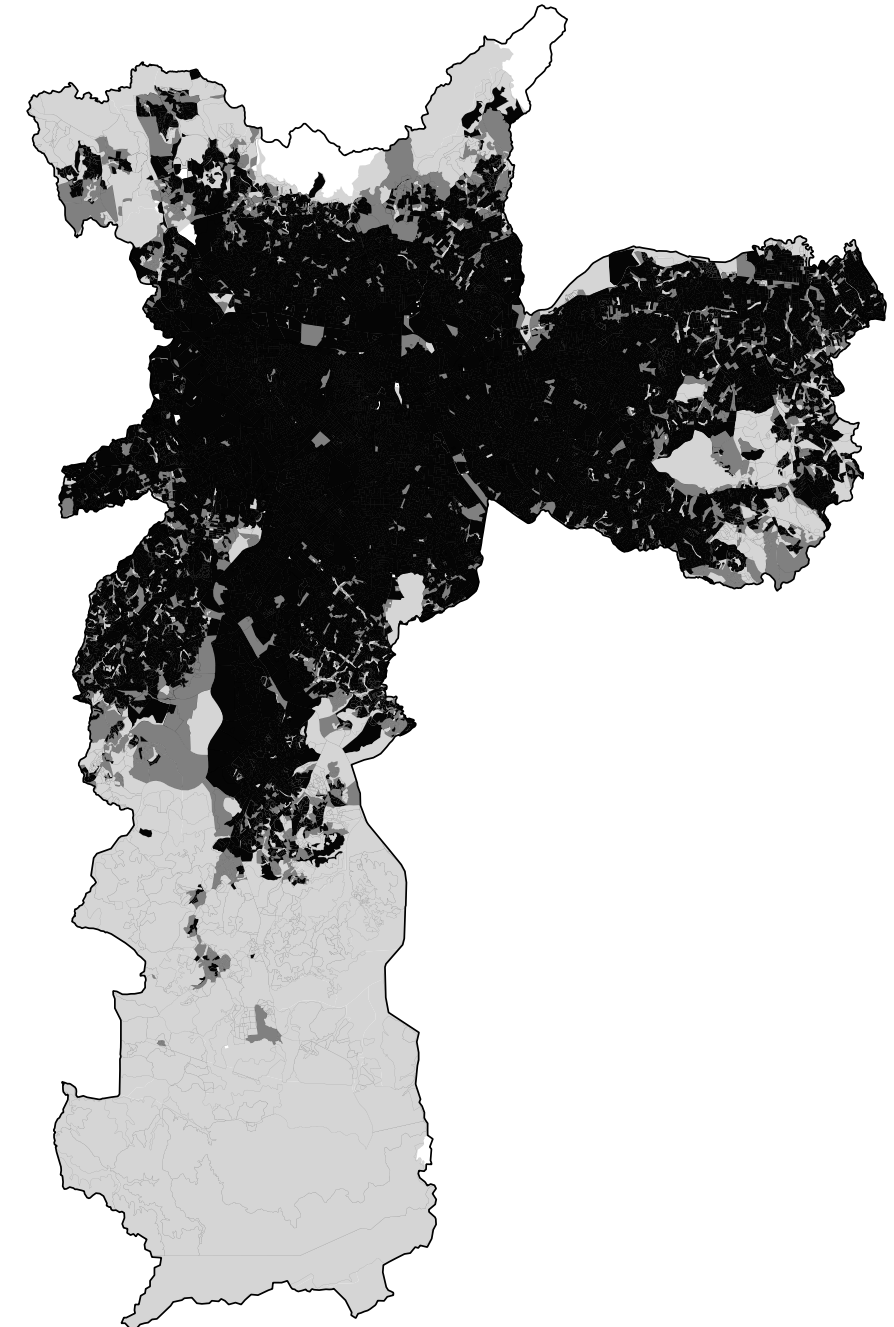
3 SEWER TOILET ACCESS - ALL SECTORS



1991



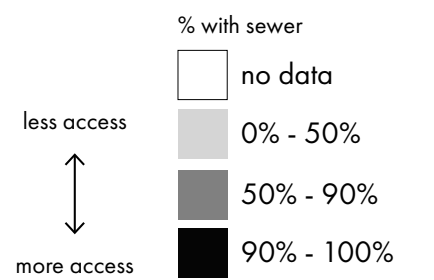
2000



2010

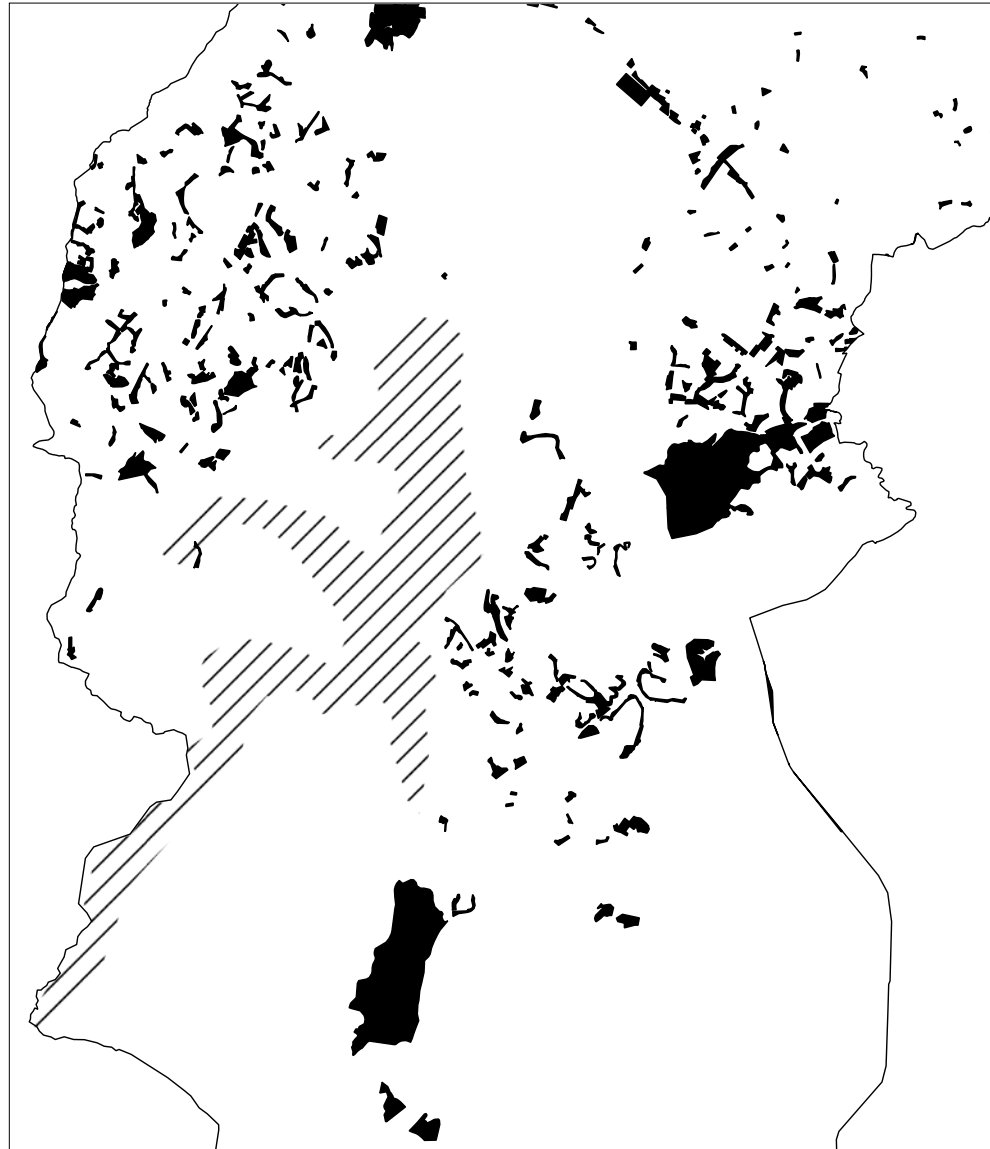


source: Brazilian Institute of Geography and Statistics (IBGE)

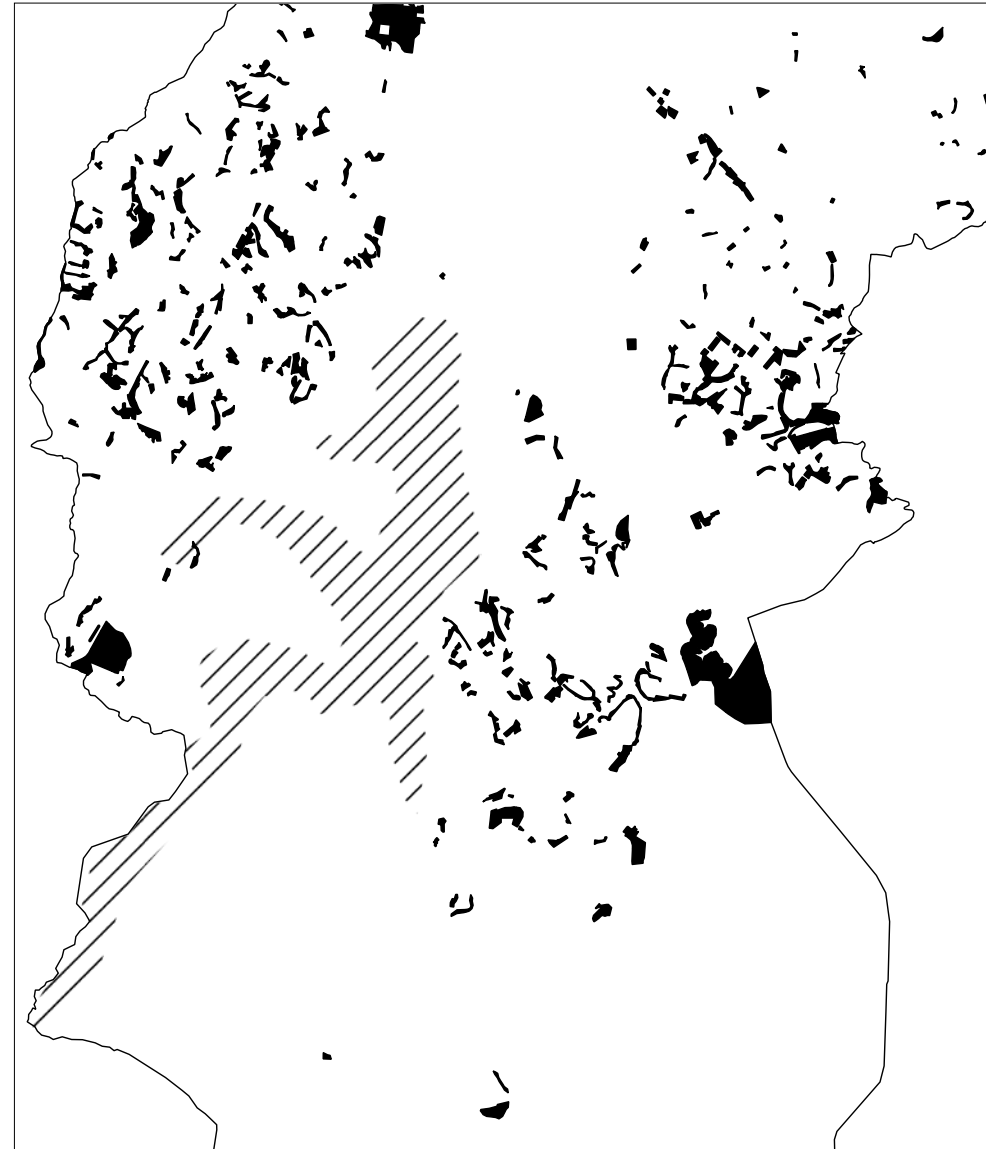


SAO PAULO - GUARAPIRANGA

4 INFORMAL SETTLEMENT BY CENSUS SECTOR



1991



2000



2010



source: Brazilian Institute of Geography and Statistics (IBGE), Global Lakes and Wetlands Database

Informal Designation (min. 51 hh)

SAO PAULO - GUARAPIRANGA

5 SEWER TOILET ACCESS - INFORMAL SECTORS ONLY



1991



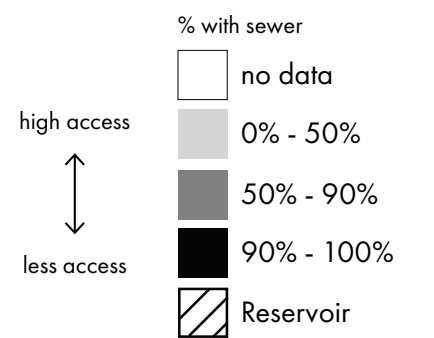
2000



2010

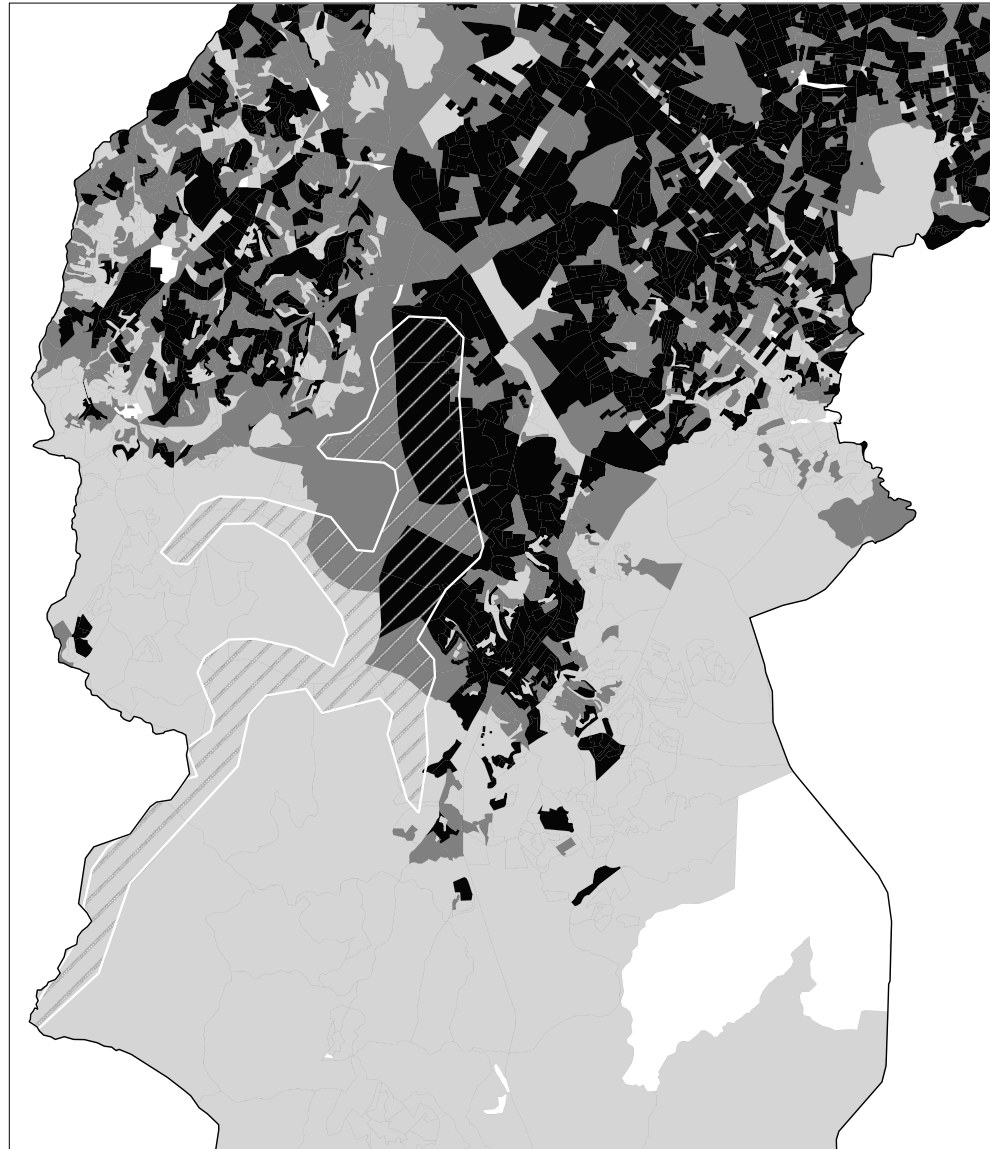


source: Brazilian Institute of Geography and Statistics (IBGE), Global Lakes and Wetlands Database



SAO PAULO - GUARAPIRANGA

6 SEWER TOILET ACCESS - ALL SECTORS



1991



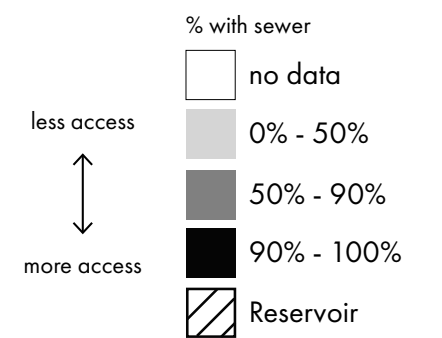
2000



2010



source: Brazilian Institute of Geography and Statistics (IBGE), Global Lakes and Wetlands Database



SAO PAULO

- 1 INFORMAL SETTLEMENT BY CENSUS SECTOR
- 2 TOILET ACCESS - INFORMAL SECTORS ONLY
- 3 TOILET ACCESS - ALL SECTORS
- 4 GUARAPIRANGA: INFORMAL SETTLEMENT BY CENSUS SECTOR
- 5 GUARAPIRANGA: TOILET ACCESS - INFORMAL SECTORS ONLY
- 6 GUARAPIRANGA: TOILET ACCESS - ALL SECTORS

JOHANNESBURG

- 7 INFORMAL SETTLEMENT BY SUBPLACE
- 8 TOILET ACCESS - INFORMAL SUBPLACES ONLY
- 9 TOILET ACCESS - ALL SUBPLACES

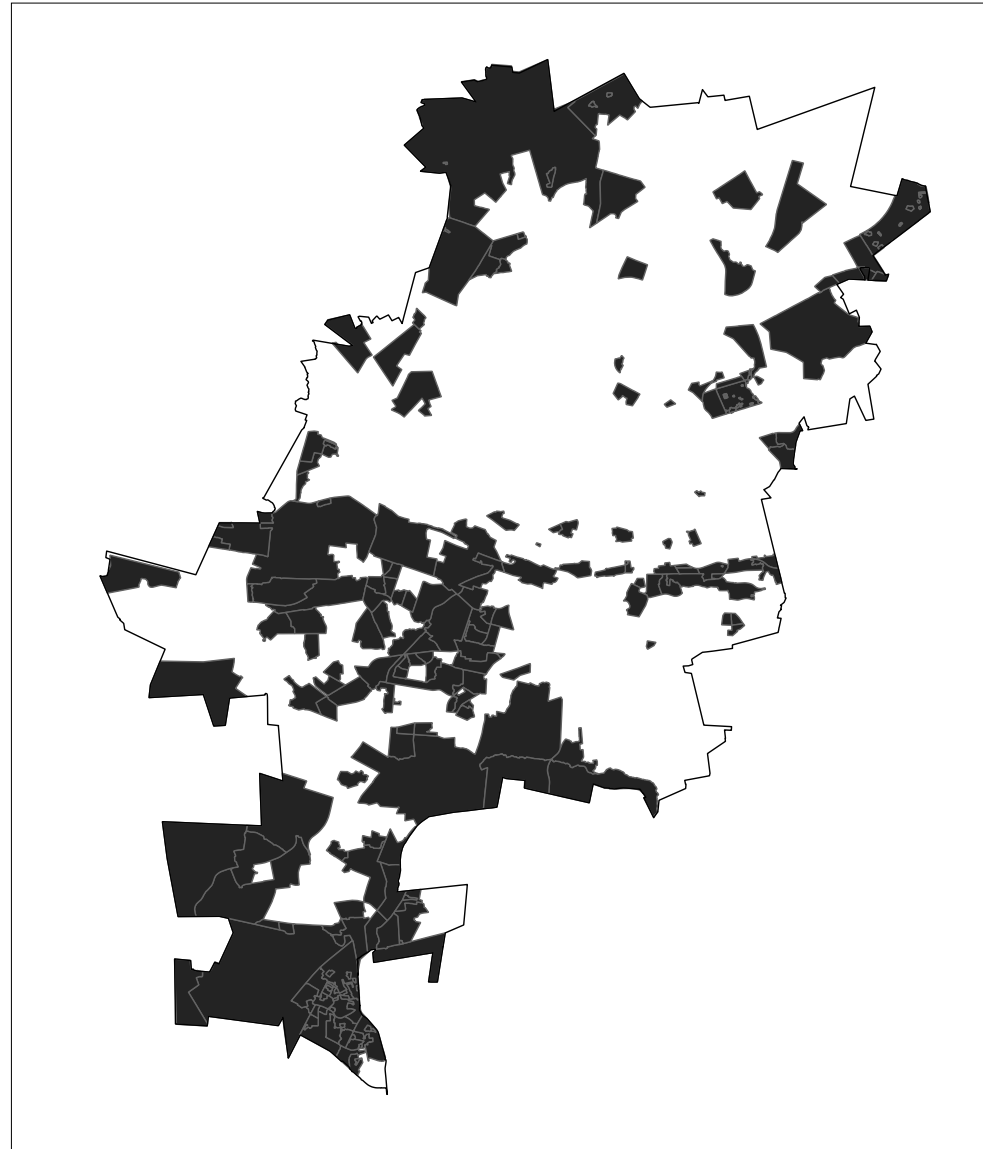
JOHANNESBURG

7 INFORMAL SETTLEMENT BY SUBPLACE



1996

84/504 Subplaces
146,187 informal hh
535,827 formal hh



2001

171/674 Subplaces
169,260 informal hh
624,740 formal hh



2011

179/782 Subplaces
196,339 informal hh
984,833 formal hh

housing informality

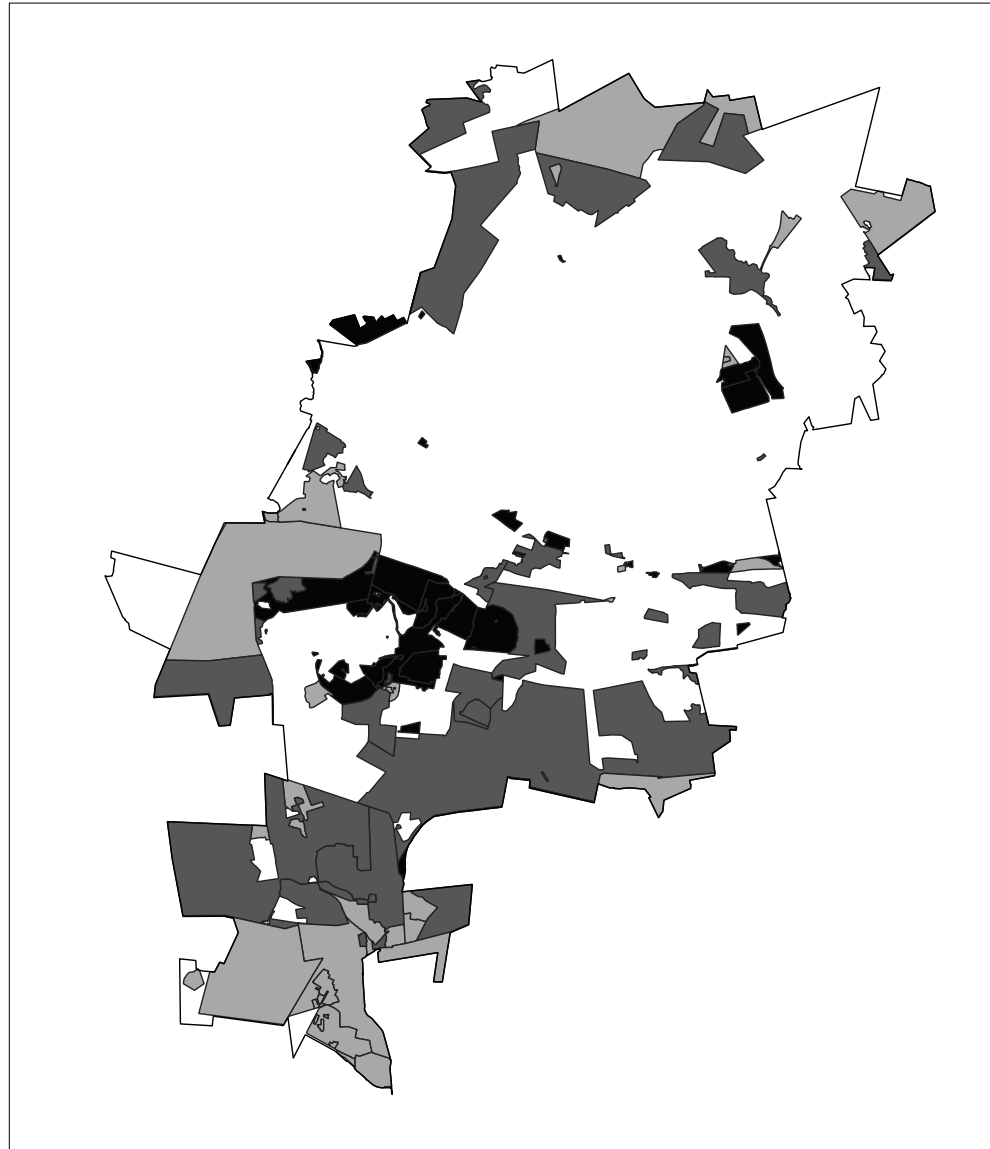
■ informality ≥ 10%



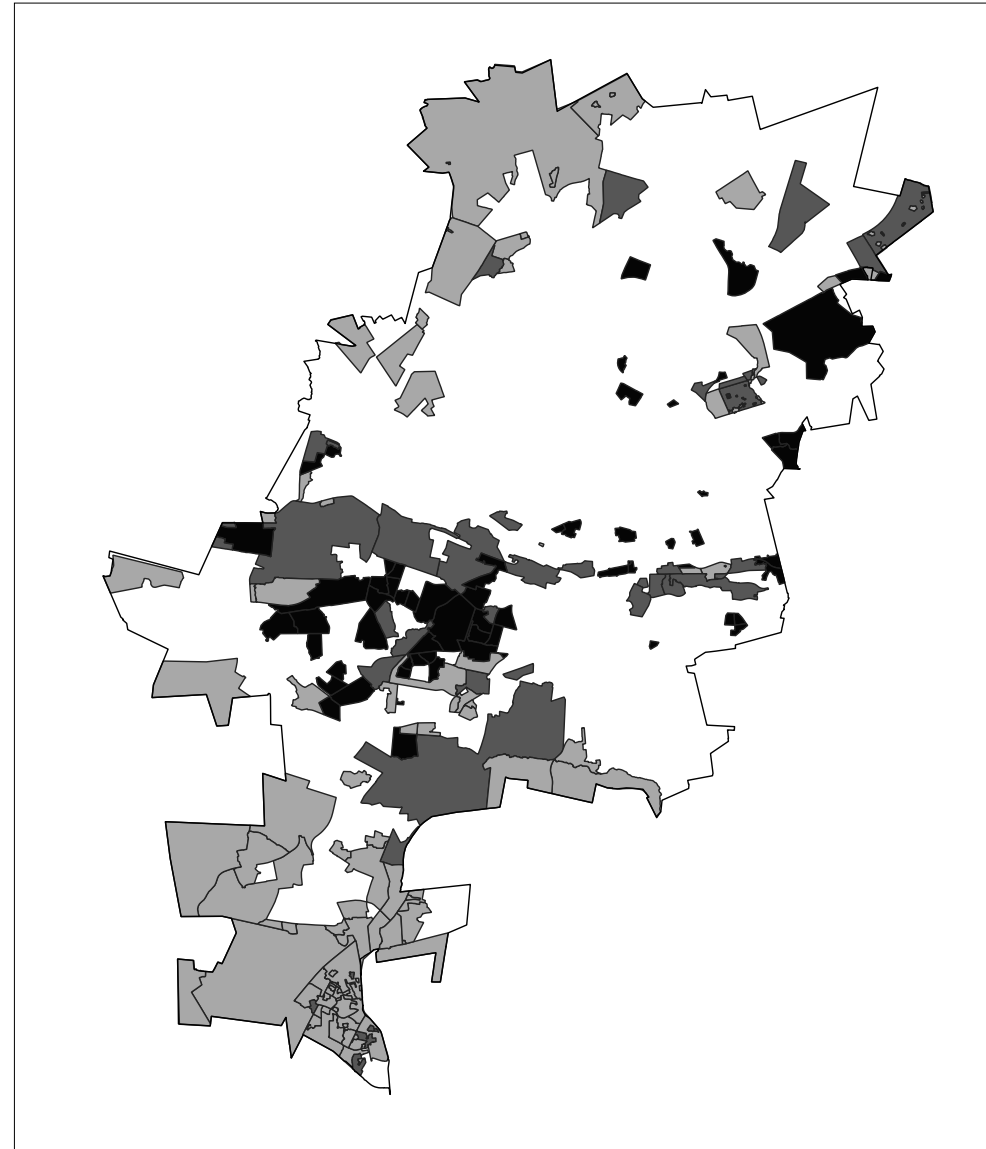
source: Statistics South Africa

JOHANNESBURG

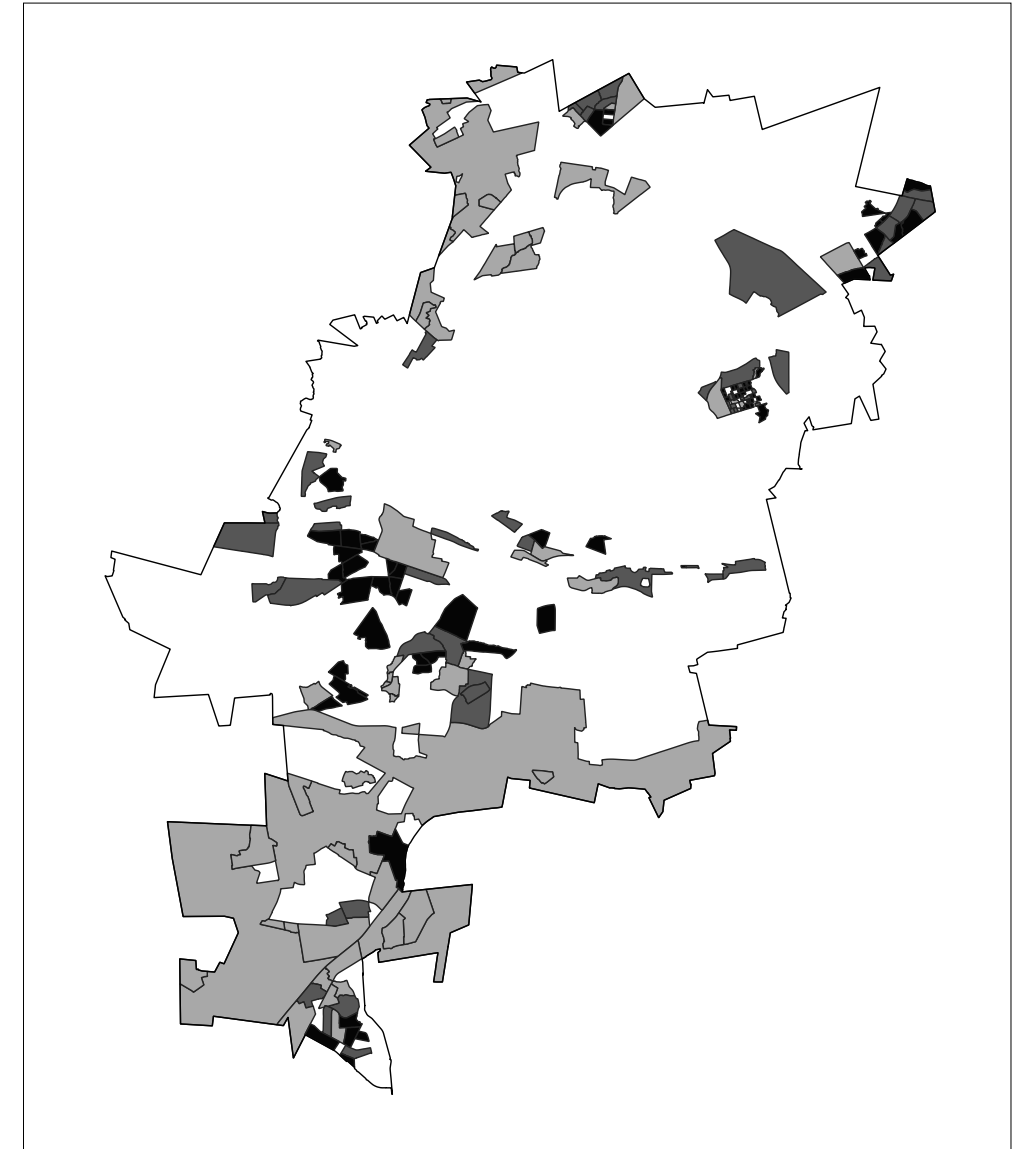
8 TOILET ACCESS - INFORMAL SUBPLACES ONLY



1996



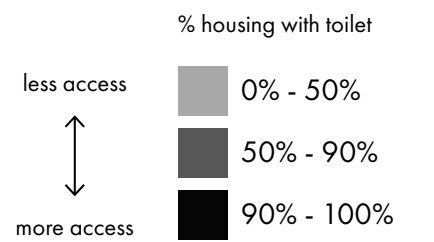
2001



2011



source: Statistics South Africa

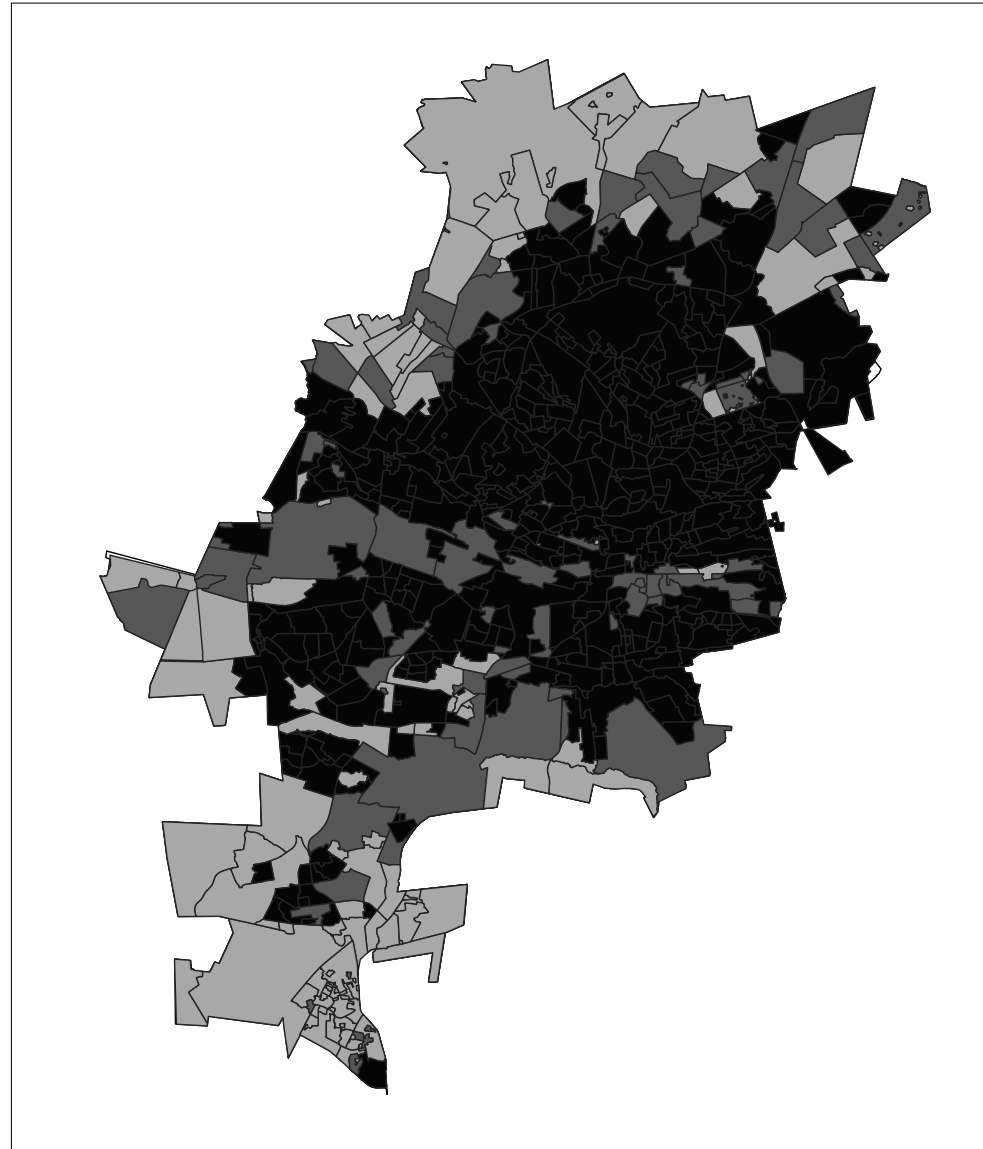


JOHANNESBURG

9 TOILET ACCESS - ALL SUBPLACES



1996



2001



2011



source: Statistics South Africa

